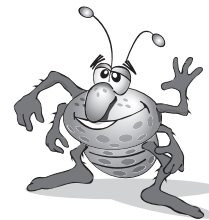


# Ant World



Congratulations on getting your new Ant World. You will soon see that ants are a lot of fun. If you follow the care instructions and treat your new ants with respect, you will have a wonderful little world to watch. You will see that ants are very social creatures and enjoy being part of a team. Every ant has their own job to do and everyone pitches in. You will notice that ants are also very smart and strong for their tiny size. Keep a magnifying glass handy because you will enjoy watching the ants "talk" to each other and seeing the funny games they play. Ants really do have their own world.

## Ant World Instructions

### CONTENTS

- 1 base
- 1 inner dome
- 1 outer dome with center cap
- 1 bag of perlite sand
- 1 coupon for free ants

### SETTING UP YOUR NEW ANT WORLD

1. Carefully remove the assembled Ant World from its package.
2. **READ ALL THE INSTRUCTIONS CAREFULLY, YOUR ANTS ARE COUNTING ON IT!**
3. Inspect the base and both domes for any cracks or damage.
4. Remove the outer dome from the base by grabbing both sides and gently pulling upwards.
5. Repeat step four for the inner dome.
6. Remove the bag of perlite sand from the base.
7. Replace the inner and then outer dome making sure each dome connects firmly to the base.
8. Remove cap from outer dome.
9. Cut one top corner of the perlite bag and slowly empty the contents **EVENLY** between the inner and outer dome by turning the Ant World around and around until the bag is empty. **NOTE**, do not clump the perlite into one spot. It is important you make sure to evenly distribute the perlite between the domes or the ants may not survive.
10. Pour approximately 2 TABLESPOONS of **DISTILLED** or **RAINWATER ONLY** into the perlite through the center cap and then replace the cover. Remember, tap water may contain chemicals which can harm your ants.
11. Place your Ant World in a safe place overnight so that the perlite can absorb the water. Even though you may want to, don't skip this important step. It is important that the perlite fully absorb **ALL** the water.
12. Once the water has been fully absorbed by the perlite, remove the cap from the outer dome. Using a small stick or toothpick, poke holes into the sand

approximately 1 inch deep in areas where you would like your ants to dig. Remember, your ants will not dig anywhere there is not already a hole.

13. It is very important that you read and follow the care and caution instructions that come with your new Ant World. These are living creatures and you have now taken on the responsibility of providing them with the care they need for their survival. Your new ants are depending on **YOU!**

14. Mail in the coupon for your free ants.

### WHEN YOUR ANTS ARRIVE

Okay, so your ants have arrived, now what? First, don't be alarmed if some of your ants did not survive. Ants can die of old age too you know. Next, your new ants will have had quite a ride and are probably very hungry and thirsty. You may need to drop a bit of distilled or rainwater into the sand along with a small bit of food before you place the ants into their new home. Now, you may notice that your ants are very excited so, to help make moving them a bit easier, place the tube into the **REFRIGERATOR** not the **FREEZER** for about 15 minutes. This will settle the ants down long enough for you to transfer them from the tube into the Ant World. Simply remove the top cap from the outer dome, then place the tube over the opening and gently shake the tube until all the ants are out.

Replace the cap. Your new ants may seem a bit sleepy at first but, that's okay, they are just trying to adjust to their new home. Put the Ant World in a safe and dark place overnight. You'll see, by the next morning, they will already be hard at work!

### GETTING YOUR OWN ANTS

If you do not want to wait for your free ants to arrive in the mail, you can certainly chase some down in your own neighborhood. Once you find a colony, get a stick that will fit into the opening on the inner dome and let the ants crawl onto it. Never touch the ants as they may bite or sting out of fear or instinct. Once you have

a few ants simply remove the top cap and gently shake the ants into the Ant World. Remember, you only need a few ants so, don't over populate. The fewer ants, the more active they will be in their new home.

Pay close attention because this is VERY IMPORTANT, NEVER MIX ANTS FROM DIFFERENT COLONIES! Mixing colonies will cause the ants to fight. If you get ants from your own neighborhood, make sure they are all from the same colony and if you do mail in your coupon, remember, you can not mix them with the ones you caught. If you do, each colony will regard the other as enemies and the ants will kill each other. Nature has it's own rules!!

## SO, WHAT DO ANTS EAT ANYWAY?

Ants will eat almost anything but, remember, they are tiny and so they eat tiny meals. DO NOT OVER FEED THEM! Once a week, open the top cap and drop in a tiny piece of bread that has been soaked in water or maybe the smallest piece of apple. Ants also like birdseed (just two or three seeds) or a bit of hardboiled egg is even better. Another favorite of your ants are leaves from fruit trees. Take a small section of the leaf, crumble it up and drop it in. For an extra special treat, drop in a dead fly or a tiny piece of hamburger, your ants will love that! Don't forget the water, you don't like to eat lunch without a drink and neither do your ants. Add just a few small drops of distilled or rainwater EVERY OTHER DAY. Keep the sand moist but, NOT SOGGY. Also, do your best not to get water on the bits of food and if you see water droplets forming on the inside of the Ant World, stop watering for a few days. Ants are very clean so, don't put too much food in their home because it may spoil and make the Ant World messy!. It may not seem like much to you but, a tiny bit of food once a week is all they need. So, if a week is up and you still see food, wait.

### CAUTION

Handle the perlite sand with extra care. Do not swallow or inhale the sand particles. Call for a physician if necessary. Do not leave your Ant World outside or exposed to the elements. Direct heat of any kind can turn your Ant World into an oven and kill the ants inside. Don't ever shake or turn the Ant World upside down. This will ruin the tunnels and distress the ants. Place your Ant World in a quiet and safe place where it will not be bumped or disturbed. Any strong movement may collapse the tunnels and kill your ants. Your ants need a calm place to live because too much upset may kill them. Keep them in a place where other animals and household pets cannot reach them. Keep them away from very young children as they make become curious and accidentally shake or knock over the Ant World causing harm to the ants. Remember, your ants are relying on you to keep them safe.

 **WARNING:**  
CHOKING HAZARD - Small parts  
Not for children under 3 years

Do not over feed NOR over/underwater the ants. These are the most common causes of death for the ants. They need you to take good care of them and their new home. NEVER leave the top cap off the Ant World. Never turn the Ant World upside down to change the batteries.

Okay, one last thing! On the base of your new Ant World is a big button and when you push it, a red light will come on so you can better see the ants. Now, the light is red because red won't disturb the ants as much as a clear light. HOWEVER, ants don't need or want a nightlight so, don't forget to turn it off when you are not studying the ants. If you don't, it will only upset the ants and run down the batteries. So, remember you can't sleep or go about your daily business with a red light shining in your face AND NEITHER CAN YOUR ANTS!

## CHANGING THE BATTERIES

The Ant World requires 2 AAA batteries and a small screw driver. The battery compartment is on the bottom of the base so, THIS IS A TWO PERSON JOB!

Remember, never turn your Ant World upside down!

- 1.) With the small screw driver simply loosen the screw and remove the cover.
- 2.) Insert the batteries as indicated by the polarity symbols.
- 3.) Replace the compartment cover and tighten the screw. DONE!

### BATTERY CAUTION

Only adults should replace batteries. Do not mix old and new batteries or different types of batteries. Do not mix alkaline, standard (carbon-zinc) or rechargeable (nickel-cadmium) batteries. Dispose of old batteries promptly and properly. Do not burn or bury them.

Any batteries installed in your Ant World are for demonstration purposes only and we make no warranty as to the battery life. Replace the batteries when the Ant World stops operating properly.

Batteries can leak chemicals and harm electronic parts, so remove them if you do not plan to use your Ant World for several weeks.

- Use only fresh batteries of required size and recommended type.
- Never use rechargeable batteries.
- Non-rechargeable batteries are not to be charged.
- Be sure the batteries are inserted with the correct polarity.
- Exhausted batteries are to be removed from the toy.
- The supply terminals are not to be short-circuited.

# SUMMIT™

*Toys with a twist*

© 2007 Summit Products, LLC.  
Trussville, AL 35173  
**PRINTED IN CHINA**

