

## Bug ID Instructions

Have you ever seen a bug or insect and wished you knew more about it? Thought perhaps you had seen a bug nobody else ever had and wanted to find out? What about all those curious colors? Do they mean something? What do they eat and how do they find food? How do they defend themselves? Where did they come from? Well, now is your chance to have your questions answered and to better understand the bugs and insects you see all around you. Before long, you will know all kinds of great facts about all kinds of little creatures that you can share with your family and friends. Some, more amazing than you would ever have thought!

### CONTAINS

- 1 Bug ID
- 1 Backyard Safari Bug Field guide

### USING THE BUG ID

Carefully remove your new Bug ID from its package and read all the instructions thoroughly before use. Once free from the packaging, turn on the Bug ID with the slide switch located on the right side of the handle. **WAIT!** Did you remember to bring along your field guide? Your field guide is a very useful tool. It has tons of information to go along with what the Bug ID will teach you. So, make sure you have it handy! All set, **GREAT!** The first thing the Bug ID will do is ask you if you want to ID a bug. Now, if you already have a bug in site, then you begin the process of identifying it by answering a series of yes and no questions asked to you by the Bug ID. Yeah...it really does "talk" to you! Once a bug has been identified, then you can press the "?" button for more information on that bug. Anytime you want to ID a new bug, just press **AND** hold the "?" button. If there is ever a glitch in the program, no problem, just turn the Bug ID off and on. This will reset the program and you're back in business. When you are all finished, don't forget to turn the Bug ID off and store it in a safe place.

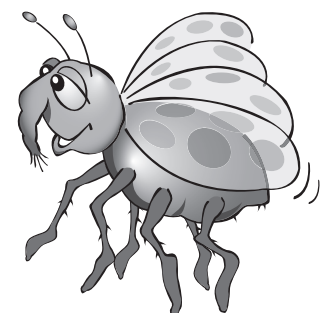
Okay, there is one more **VERY IMPORTANT THING** for us to talk about. If the Bug ID identifies a bug or insect as **DANGEROUS**, **LEAVE IT ALONE!** The idea is for you to be able to learn about insect and bugs **WITHOUT** touching or disturbing them. All living creatures may bite or sting if they feel trapped or in danger. Some insects may even be poisonous. Nature gives all living creatures the ability to protect themselves from harm. They need these abilities to survive and fend off predators. So, as tempted as you might be, **DON'T TOUCH!** Remember, the best explorers leave things just as they found them. The goal is always to learn and never to harm.

### USING THE FIELD GUIDE

The Backyard Safari Bug Field Guide that comes along with your new Bug ID is a very useful and fun tool. It contains information on all the same bugs and insects as your Bug ID. Even better though, it has **MORE** information to offer you. So, if you want to learn something extra about a bug, just look it up in your field guide. You can read and learn about bugs any time, any place with the field guide. You can carry it along with you, even to school and you don't need a bug or insect to use it. Just open up the book and have fun!

### CARING FOR THE BUG ID

Keep the Bug ID clean and dry. If it does get wet, wipe it dry immediately.  
Use under normal, and safe play conditions only.  
When not in use, store the Bug ID in a clean, dry area and do not leave it exposed to the elements.  
Watch for any cracks or damage.  
Occasionally after use, wipe the Bug ID off with a damp cloth before putting it away.  
Remember, if you follow the instructions, keep the Bug ID clean and remember not to leave it outside, it will provide you with tons of fun.



## CHANGING THE BATTERIES

The Bug ID requires 2 AAA batteries. Alkaline batteries are recommended. Never use rechargeable batteries.

You will need a small screw driver to remove the cover and access the battery chamber.

- 1.) Using a Phillips screwdriver, loosen the screw on the battery compartment cover on the back of the handle. Remove the cover completely.
- 2.) After removing the old batteries, place the new ones in the compartment as indicated by the Polarity symbols.
- 3.) Replace the cover and hold it in place while you tighten the screw.

### CAUTION

Do not leave your Bug ID outside or exposed to the elements.

The Bug ID is intended for bugs and insects only. When cleaning the Bug ID, USE ONLY WATER AND NEVER HOUSEHOLD PRODUCTS, not even window cleaner.

Lastly, BE VERY CAREFUL of any bugs that are IDENTIFIED AS DANGEROUS! NEVER TOUCH THOSE BUGS, PLEASE! Remember, while insects and bugs may be interesting and fun, it doesn't mean you should pick them up or handle them in any way. Some insects and bugs may even bite or sting if they feel frightened or trapped. You're an explorer, so be smart and careful in the way you treat all living things in nature. The idea is to learn and explore but, it is your responsibility to use the Bug ID properly. A good explorer always respects nature.

### BATTERY CAUTION

Only adults should replace batteries. Do not mix old and new batteries or different types of batteries. Do not mix alkaline, standard (carbon-zinc) or rechargeable (nickel-cadmium) batteries. Dispose of old batteries promptly and properly. Do not burn or bury them.

Any batteries installed in your Bug ID are for demonstration purposes only and we make no warranty as to the battery life. Replace the batteries when the Bug ID stops operating properly.

Batteries can leak chemicals and harm electronic parts, so remove them if you do not plan to use your Bug ID for several weeks.

- Use only fresh batteries of required size and recommended type.
- Never use rechargeable batteries.
- Non-rechargeable batteries are not to be charged.
- Be sure the batteries are inserted with the correct polarity.
- Exhausted batteries are to be removed from the toy.
- The supply terminals are not to be short-circuited.

## COMPLIANCE WITH FCC REGULATIONS

This device complies with Part 15 of the FCC Rules. Operation is subject to the following two conditions:

- (1) this device may not cause harmful interference, and
- (2) this device must accept any interference received, including interference that may cause undesired operation.

**NOTE:** This equipment has been tested and found to comply with the limits for a Class B digital device, pursuant to Part 15 of the FCC Rules. These limits are designed to provide reasonable protection against harmful interference in a residential installation. This equipment generates, uses and can radiate radio frequency energy and, if not installed and used in accordance with the instructions, may cause harmful interference to radio communications. However, there is no guarantee that interference will not occur in a particular installation. If this equipment does cause harmful interference to radio or television reception, which can be determined by turning the equipment off and on, the user is encouraged to try to correct the interference by one or more of the following measures:

- Reorient or relocate the receiving antenna.
- Increase the separation between the equipment and receiver.
- Connect the equipment into an outlet on a circuit different from that to which the receiver is connected.
- Consult the dealer or an experienced radio/TV technician for help.

**CAUTION:** Changes or modifications not expressly approved by the party responsible for compliance could void the user's authority to operate the equipment.

 **WARNING:**  
CHOKING HAZARD - Small parts  
Not for children under 3 years

**SUMMIT**<sup>™</sup>  
*Toys with a twist*

© 2007 Summit Products, LLC.  
Trussville, AL 35173

PRINTED IN CHINA