



Critter Projector Instructions

Have you ever wondered what it would look like if you could watch what insects do from a Projector? See them bigger and clearer than ever? Even Critters that live in the water? Well, now you can with your new Critter Projector! Once you focus in on your bugs and get a real look at how they behave, you will soon see just how amazing these creatures are!

CONTAINS

- 1 Critter Projector Body
- 1 Projector Viewing Reel
- 1 Round Watertight Holding Container

USING THE CRITTER PROJECTOR

Run through the directions **FIRST** and practice a few times to make sure you can follow the steps smoothly **BEFORE** using a live bug. Remember, you don't want to harm your insects.

First, you must have an insect in your capture core. After that is done, remove the reel from the Projector Body by pulling straight up until it is free. Select one of the four chambers in which to place your insect. Next, notice there are two clear disks attached to the front of the reel containing one hole each. To release the insect into the reel, you push on the tab located at the side of the reel and then align the clear disk holes to the chosen chamber. At that point, the bug will not be able to get out while you view it in the Projector. Proceed to the next chamber and release a second bug. Do this until all four chambers contain insects. Once you have finished the fourth chamber, rotate the clear outer disk one quarter turn in either direction then rotate the **INNER AND OUTER** disk one quarter turn in the same direction as the first disk. Now, take a minute to check that all four chambers are sealed with your insect inside. Done? Okay, **GOOD JOB!** You are now ready to view your bugs!

Insert the reel back into its holder with the clear disk facing the front. You should hear it click into place. Pull the trigger on the handle and the Projector light will shine through the lens and project a shadow of the living insect inside the chamber. If your insect is out of focus, don't worry. Simply turn the lens dial on the front of the Projector clockwise or counter clockwise as needed to bring your insect into focus. Want to view another bug captured in the reel? Just hold the Projector body and manually turn the reel clockwise or counter clockwise one quarter turn to see the next insect. It's easy, isn't it!

HOLD ON!! Your new Critter Projector has one more very cool feature! Would you like to view some critters that live in the **WATER**? No problem, use the supplied watertight container to hold your water critters like tadpoles, fish or water bugs so you can view them through the Projector. Don't forget to make sure the cap fits snugly against the container body! Next, remove the reel from the Projector. After making sure there is an empty chamber in the reel, align the inner and outer disk to drop in the water container. Place the reel back into the Projector and rotate the reel until the light shines through the water container!

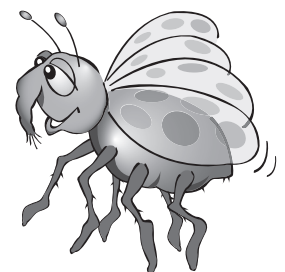
Okay, you're all done viewing your bugs for now. To release the insects, just reverse the above process! At this time, remember to either place your bugs safely back in their Habitat or take them back outside and gently return them where they were found.

CARING FOR THE CRITTER PROJECTOR

Keep the Critter Projector clean and dry. If it does get wet, wipe it dry immediately.

Use under normal, and safe play conditions only. When not in use, store the Critter Projector in a clean, dry area and do not leave it exposed to the elements. Watch for any cracks or damage to the disks and chamber areas.

Occasionally after use, wipe the Critter Projector off with a damp cloth before putting it away. Remember, if you follow the instructions and keep the Critter Projector clean, it will provide you with tons of fun.



CAUTION

Do not leave your Critter Projector outside or exposed to the elements.

The Critter Projector is intended for bugs and insects only.

Do not shine the light from the Critter Projector into the face of people or pets.

While pushing the reel into the Projector body, keep fingers clear to avoid pinching while the reel is being locked into place.

Be careful not to crack or damage the disk and chamber areas.

NEVER LEAVE THE INSECTS IN THE CHAMBERS.

When you have finished viewing them through the Projector, **ALWAYS** return them to their home immediately.

Lastly, remember you are using the Critter Projector to explore and learn about living creatures in nature. If you keep the insects, it is your responsibility to keep them in a safe area and to make sure they have food and water. They are counting on you to take good care of them so please, don't take your new responsibilities lightly. Remember to always respect nature.

CHANGING THE BATTERIES

The Critter Projector requires 4 C batteries. Alkaline batteries are recommended. Never use rechargeable batteries.

You will need a small screw driver to remove the cover and access the battery chamber located on the bottom of the main support area.

1.) Using a Phillips screwdriver, loosen the 2 screws that hold the bottom battery door in place. Remove the cover.

2.) After removing the old batteries, place the new ones into the compartment as indicated by the Polarity symbols.

3.) Replace the cover and hold it in place while you tighten both screws.

BATTERY CAUTION

Only adults should replace batteries. Do not mix old and new batteries or different types of batteries. Do not mix alkaline, standard (carbon-zinc) or rechargeable (nickel-cadmium) batteries. Dispose of old batteries promptly and properly. Do not burn or bury them.

Any batteries installed in your Critter Projector are for demonstration purposes only and we make no warranty as to the battery life. Replace the batteries when the Critter Projector stops operating properly. Batteries can leak chemicals and harm electronic parts, so remove them if you do not plan to use your Critter Projector for several weeks.

- Use only fresh batteries of required size and recommended type.
- Never use rechargeable batteries.
- Non-rechargeable batteries are not to be charged.
- Be sure the batteries are inserted with the correct polarity.

- Exhausted batteries are to be removed from the toy.
- The supply terminals are not to be short-circuited.

CHANGING THE LIGHT BULB

Only adults should replace the light bulb. However, before doing so, make sure to double check that the trigger is working properly and the batteries are new. If the bulb is still not on, then proceed to this next step. Loosen the two top facing screws on the bulb replacement panel, located towards the top of the handle. Carefully remove the bulb assembly and take out the bulb. Bring it with you to your nearest electronics store and purchase a replacement. Reassemble.

Light bulb rating:
6V, 4.5W



WARNING:

CHOKING HAZARD - Small parts
Not for children under 3 years

SUMMIT™

Toys with a twist

© 2007 Summit Products, LLC.
Trussville, AL 35173

PRINTED IN CHINA