

## Night N Day Habitat Instructions

Have you ever wondered what it would look like if you could cut a tree in half and see just what lives in there? Or watch insects that make their homes deep in the ground or on the outside of trees? Well, now you can with your new Night N Day Habitat. You won't need a shovel or a saw all you have to do is watch your bugs in action. You will soon see just how amazing these creatures are!

### CONTAINS

- 1 Enclosed Habitat with clear lid cap.
- 1 Magnifying glass.
- 1 Overhead light.
- 1 group of artificial leaves.

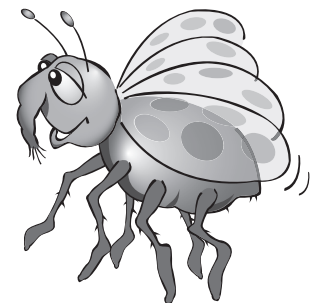
### USING THE NIGHT N DAY HABITAT

Use your Turbo or Super Bug Vacuum to capture a few insects/bugs. Then, remove the closed off capture core from your Bug Vacuum and plug it into the opening on the Night N Day Habitat, after you have removed the lid. Once the capture core is in place, turn the trap door all the way open until the insects are safely inside their new home. **REMEMBER TO ALWAYS REPLACE THE LID ON THE HABITAT.** If you don't, all your hard work will be for nothing! Now, if you look closely at your new Night N Day Habitat you will see that it has a tree with artificial leaves. Once you release your insects into the Habitat watch them crawl all around their new home. It's fun to see them navigate the tree and find little hiding places. But, do you want to really see them do something cool? Well, the tree inside the Habitat is special, it has holes in it! Right now, the holes are filled with the artificial leaves but, you can take those leaves out **AND PUT REAL ONES IN!!** This will bring the insects over to the tree and you can watch them climb it to get to their food. Use the magnifying glass, located in the front of the Habitat, to watch them climb the tree and eat! This is just what they would have to do in order to find food if they were out in your backyard. Wild, huh? Before long you will soon learn just how smart your new insects are. Don't forget to take some time to learn what your insect/bugs like to eat. And most importantly, remember you are their only source of food and water. Make sure to keep plenty of water in the water pond at the base of the tree and always check to see that your insects have food available. You can place food at the base of the tree or on the tree itself. One more thing, the name of your new Habitat is Night N Day, right? That means that you can turn on the overhead light at the top of the Habitat and a green night vision light comes on! This way, you

can watch your insects in the dark and see if they act any different, maybe they eat more or even play more! Just remember, your bugs need sleep too so, give them a break once in a while and don't leave the light on all the time. You will only wear out your batteries and get grumpy bugs. Bugs don't need nightlights!

### CARING FOR THE NIGHT N DAY HABITAT

Keep the Night N Day Habitat clean and dry. Remember to watch the Habitat for signs that it may need to be cleaned. Writing yourself a little cleaning schedule reminder and leaving it in a place where you can always see it is a smart idea! When it is time for a cleaning, simple! First gently recapture your bugs with your Turbo or Super Bug Vacuum and set them aside. Then simply hold the base with one hand and pull up on the clear, hinged top with the other until the Habitat is wide open. **CLEAN WITH WATER ONLY!! DO NOT USE ABRASIVE CLEANERS OR ANY HOUSEHOLD PRODUCTS!** Once the Habitat has been thoroughly rinsed out and the top securely in place, remove the capture capsule from your Bug Vacuum and gently place your insects back in their clean home just the way you did that very first time. Remember, if you follow the instructions for the insects, keep the Night N Day Habitat clean and remember not to leave it outside, you will have tons of fun watching your insects in their new home!.



## CHANGING THE BATTERIES

The Night N Day Habitat requires 2 AAA batteries. Alkaline batteries are recommended. Never use rechargeable batteries.

You will need a small screw driver to remove the cover and access the battery chamber.

1.) Raise the hinged overhead light on the top of the Habitat to reach the battery chamber. Next, using a Phillips screwdriver, loosen the screw on the battery compartment cover on the underside of the light.

Remove the cover.

2.) After removing the old batteries, place the new ones in the compartment as indicated by the Polarity symbols.

3.) Replace the cover and hold it in place while you tighten the screw.

### CAUTION

Do not leave your Night N Day Habitat outside or exposed to the elements.

DO NOT expose the Night N Day Habitat to heat of any kind. Doing so would turn the Habitat into an oven and kill the insects inside.

The Night N Day Habitat is intended for bugs and insects only.

Keep the Night N Day Habitat in a quiet and safe area away from household pets and small children who may become overly curious. It is important that the Habitat be placed some where it can not be bumped into or knocked over. That kind of sudden shock may harm or even kill the insects inside.

When cleaning the Night N Day Habitat, USE ONLY WATER AND NEVER HOUSEHOLD PRODUCTS. Even WINDOW CLEANER has chemicals that can be dangerous to your insects.

Lastly, remember you are using the Night N Day Habitat to explore and learn about living creatures in nature. It is your responsibility to keep the Habitat in a safe area and to make sure it is clean and the insects have food and water. They are counting on you to take good care of them so please, don't take your new responsibilities lightly. Remember to always respect nature.

### BATTERY CAUTION

Only adults should replace batteries. Do not mix old and new batteries or different types of batteries. Do not mix alkaline, standard (carbon-zinc) or rechargeable (nickel-cadmium) batteries. Dispose of old batteries promptly and properly. Do not burn or bury them.

Any batteries installed in your Night N Day Habitat are for demonstration purposes only and we make no warranty as to the battery life. Replace the batteries when the Night N Day Habitat stops operating properly.

Batteries can leak chemicals and harm electronic parts, so remove them if you do not plan to use your Night N Day Habitat for several weeks.

• Use only fresh batteries of required size and recommended type.

- Never use rechargeable batteries.
- Non-rechargeable batteries are not to be charged.
- Be sure the batteries are inserted with the correct polarity.
- Exhausted batteries are to be removed from the toy.
- The supply terminals are not to be short-circuited.



## WARNING:

CHOKING HAZARD - Small parts  
Not for children under 3 years

# SUMMIT™

*Toys with a twist*

© 2007 Summit Products, LLC.  
Trussville, AL 35173

PRINTED IN CHINA