



## Turbo Bug Vacuum Instructions

### CONTAINS

One Turbo Bug Vacuum. One regular length nozzle and one capture core.

### USING THE TURBO BUG VACUUM

Carefully remove your new Turbo Bug Vacuum from its package and read all the instructions thoroughly before use.

Make sure the capture capsule is securely connected to the body of the vacuum and the nose cone is securely connected to the capture capsule. Check to make sure the trapdoor is open and then find an insect you would like to capture. Place the nose cone over the bug and squeeze the trigger until the bug has been pulled up into the capture capsule. But **WAIT**, this is a **TURBO** Bug Vacuum! So, if you need some extra power to capture your insect, all you have to do is activate the Turbo button. It's simple, just push the glowing button on the back of the handle while squeezing the trigger and you will have all the power you need. Remember to use only enough vacuum power to pull the bug into the capsule. Releasing the trigger slightly will turn off the Turbo mode and reactivate regular power.

Once the insect is inside the capture capsule, quickly close the trapdoor/magnifying glass.

Now that the insect has been captured, the capsule may be removed from the rest of the Turbo Bug Vacuum. You may then safely examine the insect with the magnifying glass, release it or transferred it into an appropriate container. Simply open the trapdoor inside the removed capture capsule by turning the knob on the side until the insect is free. If you wish to transfer the insect into a container, keep the trapdoor closed, place the capture capsule on the open end of the container and then turn the knob to let the insect out.

Replace the capture capsule back on the body of the Turbo Bug Vacuum, close the trapdoor, replace the nose cone and your all set. It really is that easy and that fun!

### CARING FOR THE TURBO BUG VACUUM

Keep the Turbo Bug Vacuum clean and dry. If it does get wet, wipe it dry immediately.  
Use under normal, and safe play conditions only.

When not in use, store the Turbo Bug Vacuum in a clean, dry area and do not leave it exposed to the elements.

Occasionally after use, wipe the Turbo Bug Vacuum off with a damp cloth before putting it away.

Remember, if you follow the instructions, keep the Turbo Bug vacuum clean, it will provide you with tons of fun.

### CHANGING THE BATTERIES

The Turbo Bug Vacuum requires 6 AAA batteries. Alkaline batteries are recommended. Never use rechargeable batteries.

- 1.) Using a Phillips screwdriver, loosen the screw on the battery compartment cover at the bottom of the handle. Remove the cover completely.
- 2.) After removing the old batteries, place the new ones in the compartment as indicated by the polarity symbols.
- 3.) Replace the cover and tighten the screw.

### ⚠ CAUTION

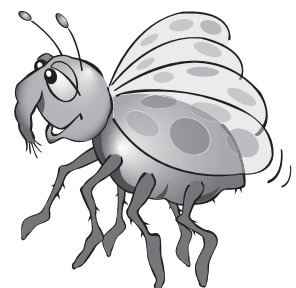
Do not leave your Turbo Bug Vacuum outside or exposed to the elements.

Do not use or point the Turbo Bug Vacuum at people or animals.

Do not try to pick up other small objects, such as coins, rocks or little brothers and sisters. The Turbo Bug Vacuum is intended only to be use on bugs and insects, trying to pick up other objects may clog the vacuum.

Yes, it is a **TURBO** Bug Vacuum but, it can't help you pick up your room so, don't try it.

Lastly, remember you are using the Turbo Bug Vacuum to explore and learn about living creatures in nature. Keep the bugs in a proper, food and air filled area where they can be safe **OR** look, learn and then let them go safely back where you found them.



**⚠ BATTERY CAUTION**

Only adults should replace batteries. Do not mix old and new batteries or different types of batteries. Do not mix alkaline, standard (carbon-zinc) or rechargeable (nickel-cadmium) batteries. Dispose of old batteries promptly and properly. Do not burn or bury them.

Any batteries installed in your Turbo Bug Vacuum are for demonstration purposes only and we make no warranty as to the battery life. Replace the batteries when the Turbo Bug Vacuum stops operating properly. Batteries can leak chemicals and harm electronic parts, so remove them if you do not plan to use your Turbo Bug Vacuum for several weeks.

- Use only fresh batteries of required size and recommended type.
- Never use rechargeable batteries.
- Non-rechargeable batteries are not to be charged.
- Be sure the batteries are inserted with the correct polarity.
- Exhausted batteries are to be removed from the toy.
- The supply terminals are not to be short-circuited.



**WARNING:**

CHOKING HAZARD - Small parts  
Not for children under 3 years

**SUMMIT™**

*Toys with a twist*

© 2007 Summit Products, LLC.  
Trussville, AL 35173

**PRINTED IN CHINA**