

Electronic Safe

Instruction Sheet

IMPORTANT:

NOTE: Any batteries purchased for use in this toy may pose a hazard to children. Please check safety notice supplied with batteries before use.

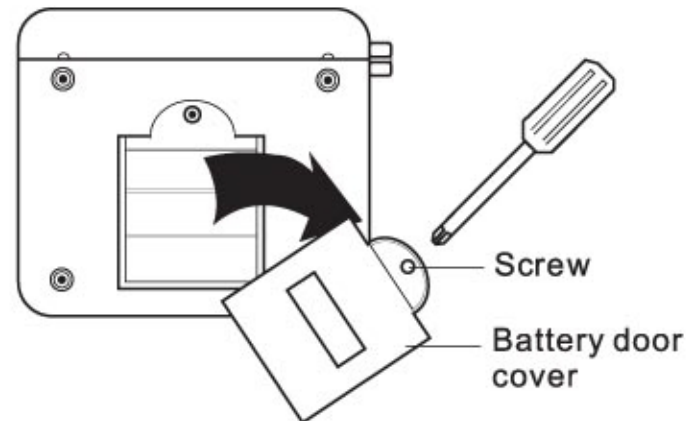
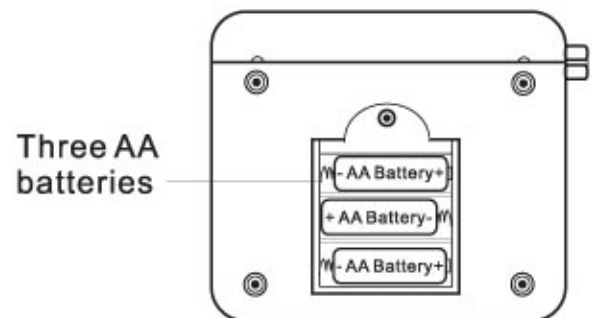
You need three AA batteries (not included) to power the safe. We recommend that you use alkaline batteries only and never use rechargeable batteries.

CAUTION:

- Use only fresh batteries of the required size and recommended type.
- Do not mix old and new batteries.
- Never mix alkaline batteries with other types of batteries.

TO INSTALL BATTERIES:

1. Use a phillips head screwdriver to loosen the screw in the battery compartment cover, then lift up the cover.
2. Put the batteries in the compartment as indicated by the polarity symbols (+ and -) marked inside.
3. Replace the cover and tighten the screw. If the safe does not work properly, the lights dim, or the sound weakens, replace the batteries.



USING THE SAFE:

To open safe, you must enter a four-digit code. The preset code for the safe is 0000. You can either use the preset code or enter your own. See "Changing the Code."

Follow these steps to use the safe.

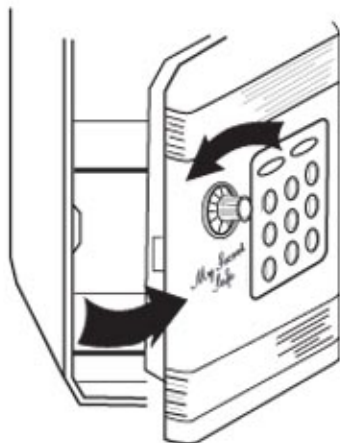
1. Enter the 4-digit code. OPEN light.

YELS cont.

Instruction Sheet

If you enter the wrong code, CLOSE flashes and two beeps sound. Try entering the code again.

2. Rotate the knob counterclockwise and pull open the door. OPEN lights for about 10 seconds and you hear creaking sounds.



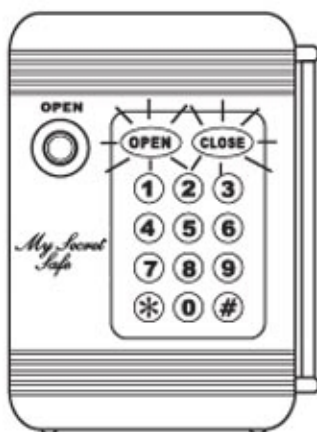
If the door is kept open for longer than 10 seconds, CLOSE flashes and the safe beeps every 20 seconds. To stop the beeping, close the door.

3. When you finish, close the door to lock the safe.

CHANGING THE CODE

The safe is preset to use the code 0000. To change the code (to a number that means something special to you, for example your birthday), follow these steps.

1. Enter the currently set code and open the door.
2. Press *. Both OPEN and CLOSE flash.



3. Within 15 seconds, enter the new 4-digit code. Press # to store your new code. OPEN and CLOSE stop flashing.

Note: If you do not enter a new code within 15 seconds, OPEN and CLOSE stop flashing. Start over at step 1.

4. Close the door of the safe.

Note: To return the code to 0000, remove the batteries, then press any key on the safe. Replace the batteries. The safe creaks.

- Non-rechargeable batteries are not to be recharged.
- Batteries are to be inserted with the correct polarity.
- Exhausted batteries are to be removed from the toy.
- The supply terminals are not to be short-circuited.

CAUTION

- Only adults should replace batteries.
- Replace the battery in either unit when unit stops operating properly.
- Use only fresh batteries of the required size and recommended type.
- Dispose of old batteries promptly and properly. Do not burn or bury them.
- If you do not plan to use your unit for several weeks, remove the batteries. Batteries can leak chemicals that can harm electronic parts.
- Do not operate main or remote unit without antennas as removal of antenna will affect normal operation of unit.

 **WARNING:**
CHOKING HAZARD - Small parts
Not for children under 3 years



© 2004 Summit Products, Inc.
Trussville, AL 35173
Printed in China.